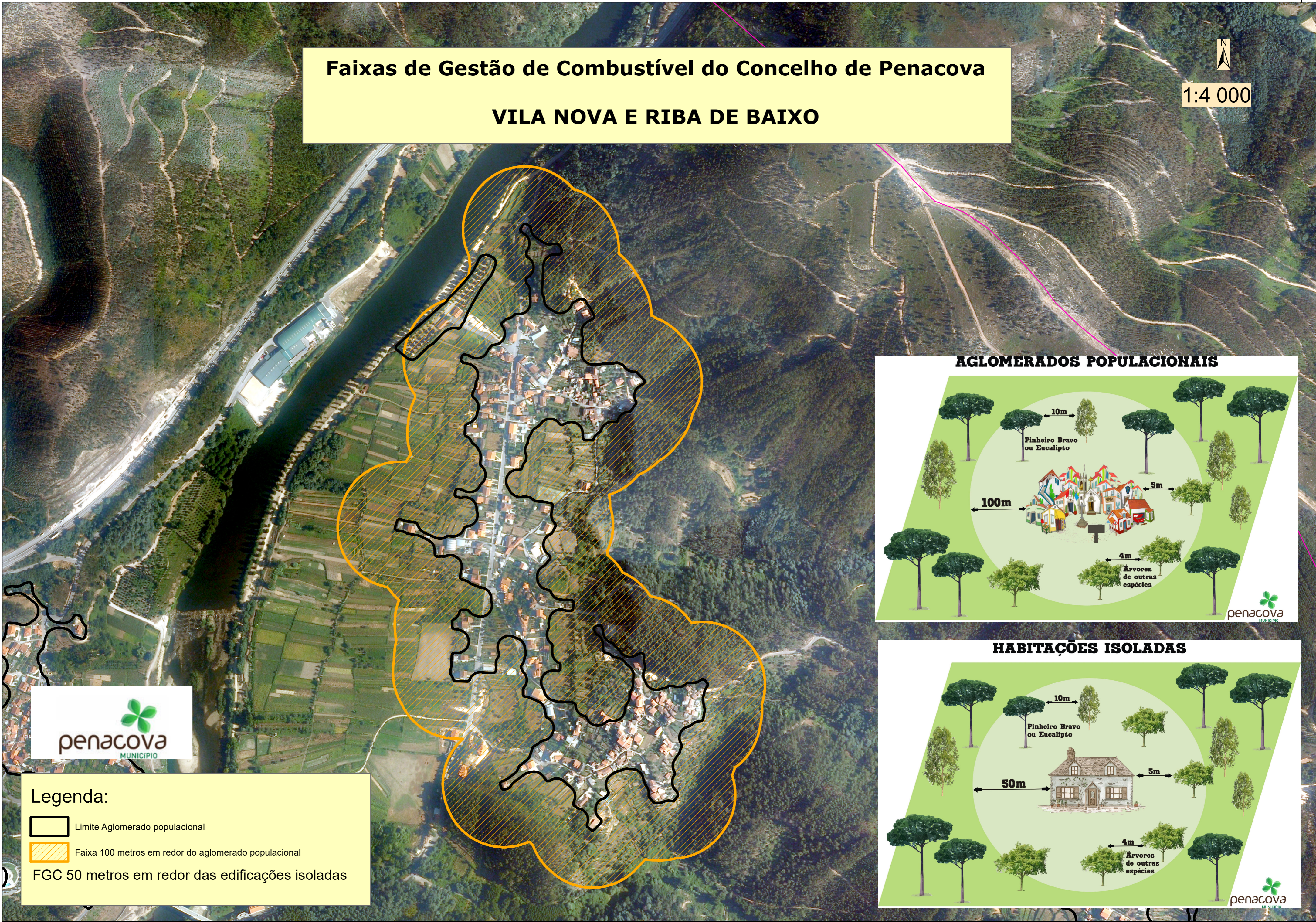


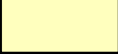

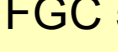
# Faixas de Gestão de Combustível do Concelho de Penacova

## VILA NOVA E RIBA DE BAIXO

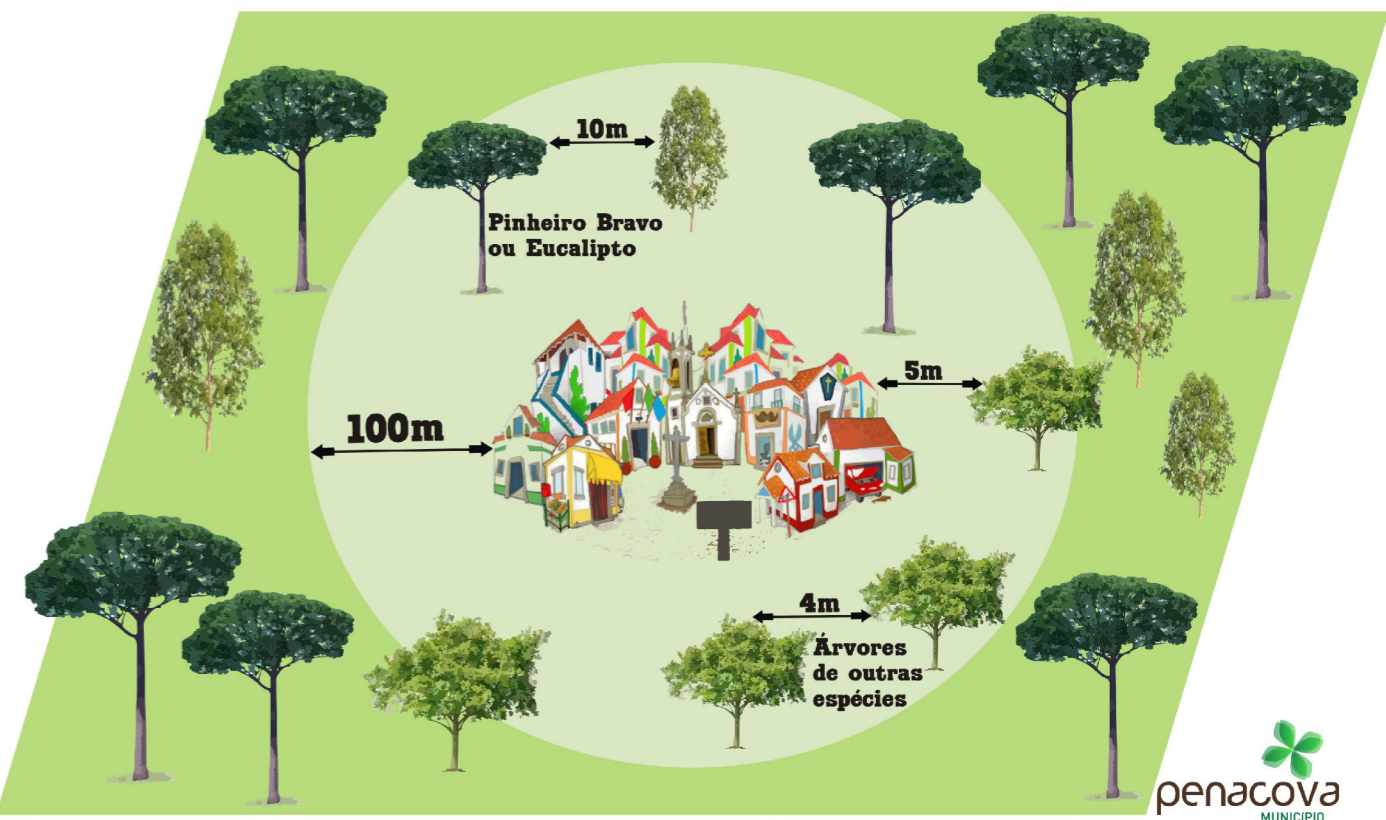
N  
1:4 000



**Legenda:**

-  Limite Aglomerado populacional
-  Faixa 100 metros em redor do aglomerado populacional
-  FGC 50 metros em redor das edificações isoladas

**AGLOMERADOS POPULACIONAIS**



**HABITAÇÕES ISOLADAS**

